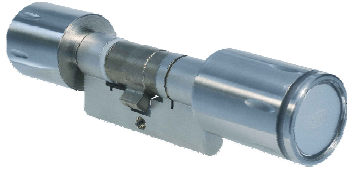


SECURITY, QUALITY, DOM.



DOM Sicherheitstechnik  
GmbH & Co. KG

Wesseling Str. 10 - 16  
D-50321 Brühl/Köln, Germany  
Phone: +49 (0) 22 32 - 704 0  
Fax: +49 (0) 22 32 - 704 365  
www.dom-sicherheitstechnik.com  
dom@dom-sicherheitstechnik.com

## **EC Declaration of Conformity: DOM Protector®**

Hereby we declare that all versions of the product line DOM Protector®

- DOM Protector® offline and online
- DOM Protector® Basic and Basic-plus

of all mounting forms (double cylinder, half cylinder, cylinder for glass doors, etc.) are in conformity with the following directives of the European Community:

- Directive 2004/108/EC of the European Parliament and of the Council of 15 December 2004 on the approximation of the laws of the Member States relating to electromagnetic compatibility and repealing Directive 89/336/EEC
- Directive 2006/95/EC of the European Parliament and of the Council of 12 December 2006 on the harmonisation of the laws of Member States relating to electrical equipment designed for use within certain voltage limits
- Directive 1999/5/EC of the European Parliament and of the Council of 9 March 1999 on radio equipment and telecommunications terminal equipment and the mutual recognition of their conformity
- Council Recommendation of 12 July 1999 on the limitation of exposure of the general public to electromagnetic fields (0 Hz to 300 GHz)

Applied standards and technical specifications:

- EN 1303: Building hardware, cylinders for locks, requirements and test methods
- EN 50371: Generic standard to demonstrate the compliance of low power electronic and electrical apparatus with the basic restrictions related to human exposure to electromagnetic fields (10 MHz - 300 GHz)
- EN 55022: Information technology equipment - Radio disturbance characteristics - Limits and methods of measurement
- ETSI EN 300 330: Electromagnetic compatibility and Radio spectrum Matters (ERM); Short Range Devices (SRD); Radio equipment in the frequency range 9 kHz to 25 MHz and inductive loop systems in the frequency range 9 kHz to 30 MHz
- ETSI EN 300 220: Electromagnetic compatibility and Radio spectrum Matters (ERM); Short Range Devices (SRD); Radio equipment to be used in the 25 MHz to 1000 MHz frequency range with power levels ranging up to 500 mW
- ETSI EN 301 489: Electromagnetic compatibility and Radio spectrum Matters (ERM); Electromagnetic Compatibility (EMC) standard for radio equipment and services
- EN 60950: Information technology equipment - Safety (low voltage directive)
- EN 61000-4-2: Electrostatic discharge (ESD) immunity
- EN 61000-4-3: Radiated radio-frequency, electromagnetic field immunity test
- EN 61000-6-2: Generic standards: Immunity for industrial environments
- EN 61000-6-3: Generic standards: Emission standard for residential, commercial and light-industrial environments

Brühl, July 2007

DOM Sicherheitstechnik GmbH & Co. KG

i.V. Dr. Thomas Kaiser  
Manager Electronics Development

Kommanditgesellschaft Brühl  
Amtsgericht Köln  
HRA 18345

ISO 9001:2000 certified

Pers. Haftende Gesellschafterin:  
SECU Beteiligungs-GmbH  
HRB 56558, Amtsgericht Köln  
Geschäftsführer: Hermann Röser  
Commerzbank Brühl, BLZ 370 400 44  
Konto 2 80 05 06  
Ust-ID-Nr. DE123504379  
Steuer-Nr. 224/5804/0069

**SECURIDEV**